



Windsor West Hants Asset Management Road Map



Troy Burgess:

Acting Director of Public Works, Town of Windsor

Rob Butler

Municipal Engineering Technologist, Town of Windsor

Matt Delorme:

Project Manager, Windsor-West Hants Asset Management Road Map

Just the facts...

Windsor

- Population 3,650
- Urban
- Dense Infrastructure
- 9.1 km²



West Hants

- Population 15,350
- Rural
- Low Density Infrastructure
- 1,244 km²



And the fun...

- Settled by Mi'kmaq thousands of years ago
- Followed by Acadians and English in 17th and 18th century
- Windsor is known as “the birthplace of hockey”
- West Hants has 30 kilometres of dikes protecting land from the Bay of Fundy's 50 foot tides



WWH

WINDSOR / WEST HANTS

TOGETHER



Who Participates?

- Elected Officials
- Municipal Staff (Administration, Public Works, Finance, Parks and Recreation)
- Fire Services
- Community Consultation
- Consultants

WWH

WINDSOR / WEST HANTS

TOGETHER

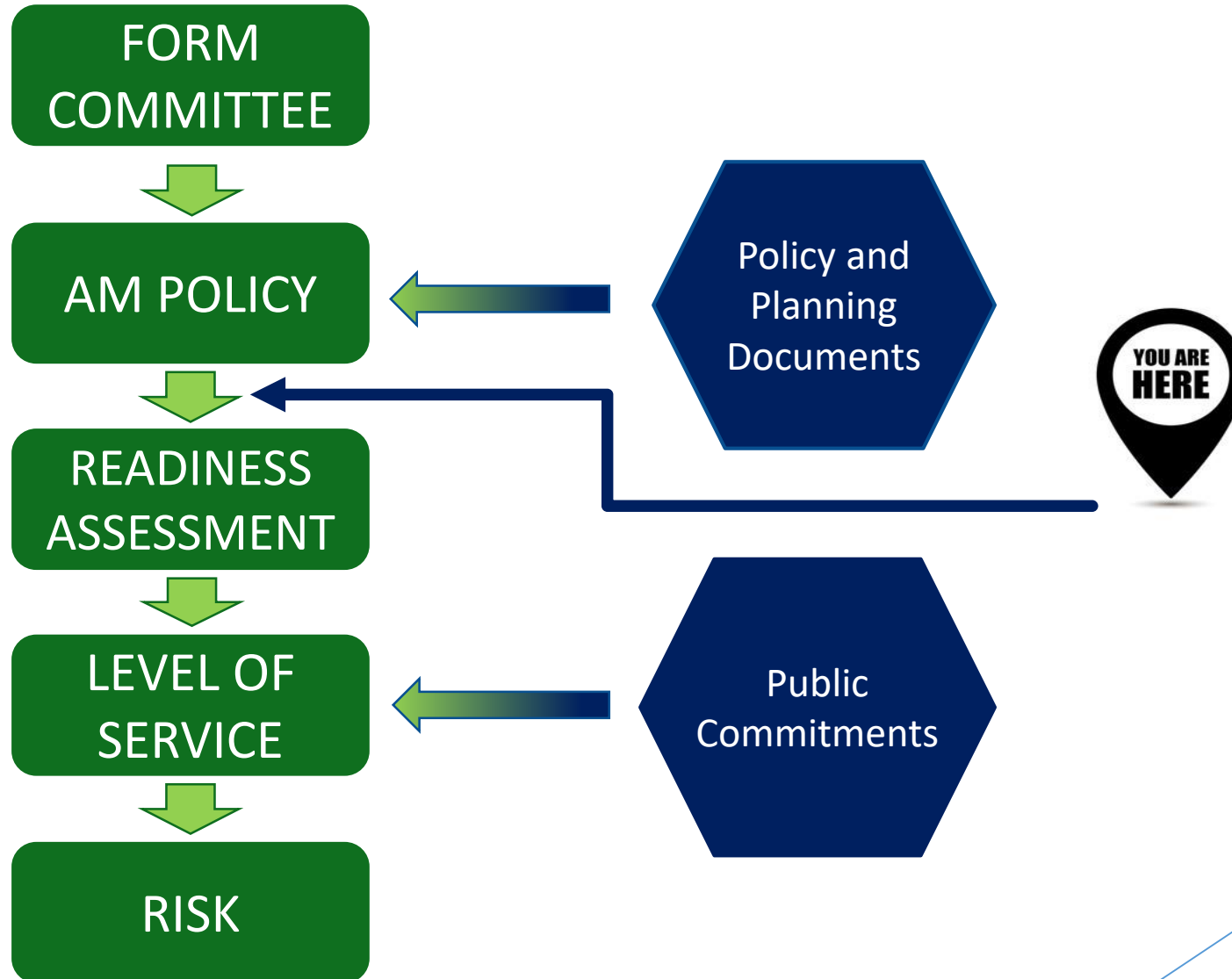


- Leverage collective resources
- Respond to opportunities together
- Provide more effective decision-making in land use, regional planning, infrastructure and economic development
- **Consolidate management of assets**



ASSET MANAGEMENT ROADMAP

POLICY AND GOVERNANCE





Asset Management Policy

| | | |
|-----------------------|--------------------------------|----------------------------------|
| Policy Name: | Asset Management Policy | Policy No.: XXX-XXXX-XXXX |
| Effective: 2019 mm dd | Amended: | Renewal date: 2022 mm dd |

1. PURPOSE:

This asset management policy provides the Regional Municipality with a framework for consistent for transparent decision making which considers strategic plans, budgets, service levels and risks.

2. STRATEGIC ALIGNMENT:

The principles in this asset management policy and our asset management planning will align with the vision and values our community has been built on and the strategic direction we have planned for our community's future as outlined in:

Municipal Planning Strategy (Windsor)

Municipal Planning Strategy (District of West Hants)

Integrated Community Sustainability Plan (Windsor)

Integrated Community Sustainability Plan (District of West Hants)

3. SCOPE:

This policy applies to all assets currently owned and managed and under sole jurisdiction by the Region of Windsor West Hants, but does not apply to solid waste, street lights, Valley Community Fibre Network infrastructure, fire services assets.

4. PRINCIPLES:

This asset management policy is based on guiding principles that reflect the overall purpose, goals and benefits of asset management planning.

Asset Management Policy

1. Purpose

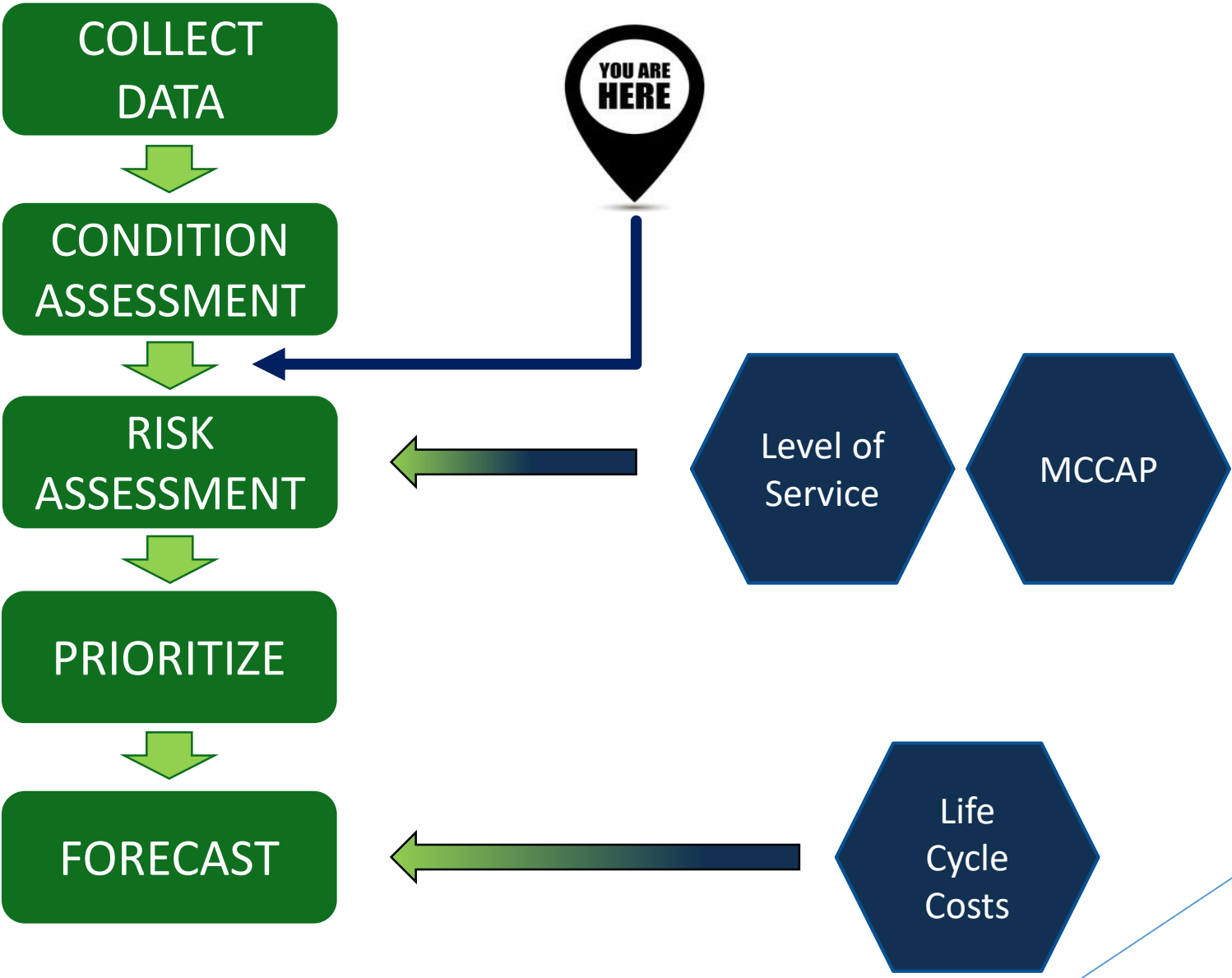
2. Strategic Alignment

3. Scope

4. Principles

5. Roles and Responsibilities

ASSET INVENTORY



Windsor Water Supply Network

Probability of Failure

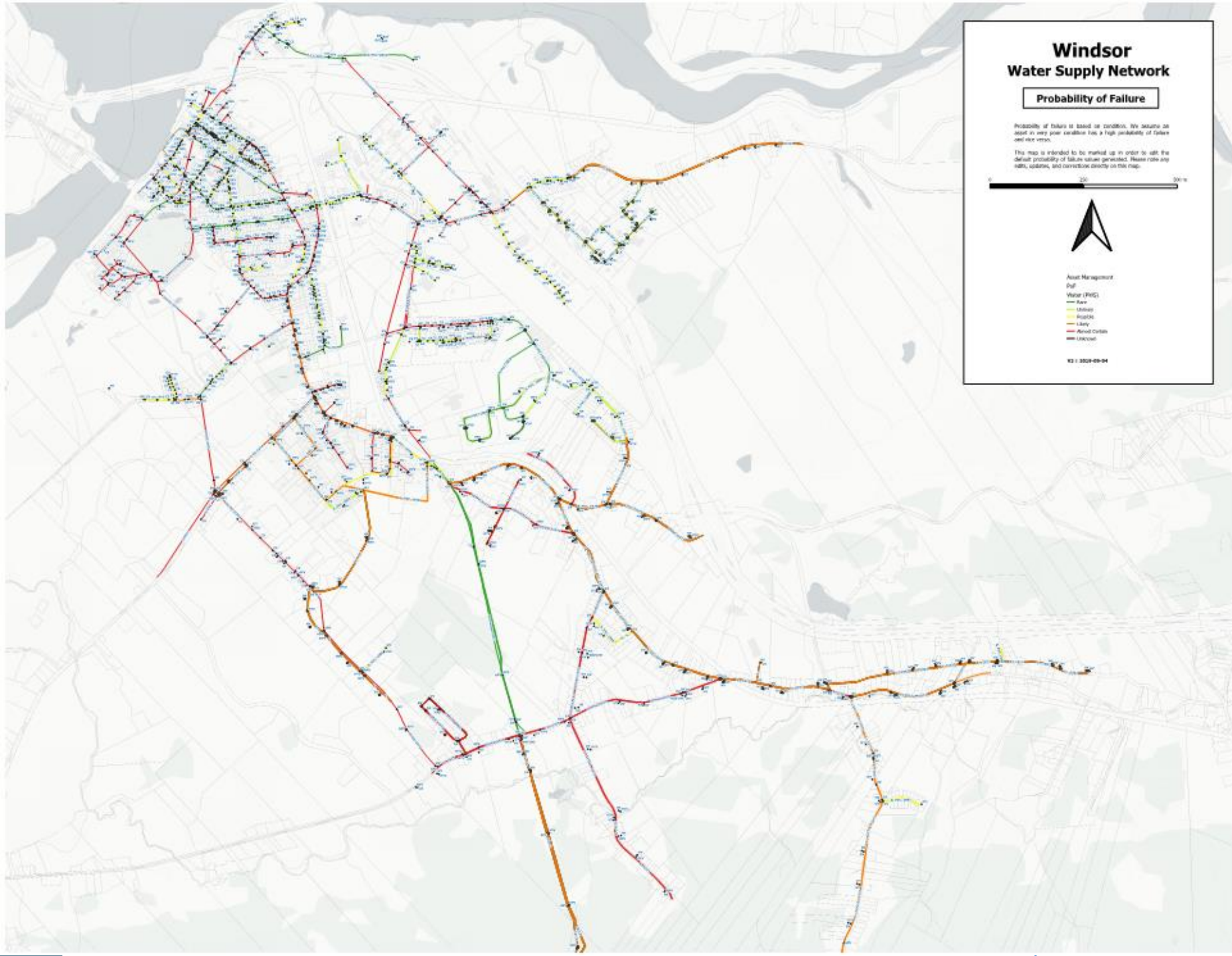
Probability of failure is based on condition. We assume an asset in very poor condition has a high probability of failure and vice versa.

This map is intended to be marked up in order to edit the default probability of failure values generated. Please note any edits, updates, and corrections directly on this map.



- Asset Management
Of:
Water (PWG)
- Raw
 - Unleaded
 - Unleaded
 - Leaky
 - Period Critical
 - Leakage

W2 | 2024-09-04



Windsor Water Supply Network

Consequence of Failure

Consequence of failure is the severity of impact when an asset fails.

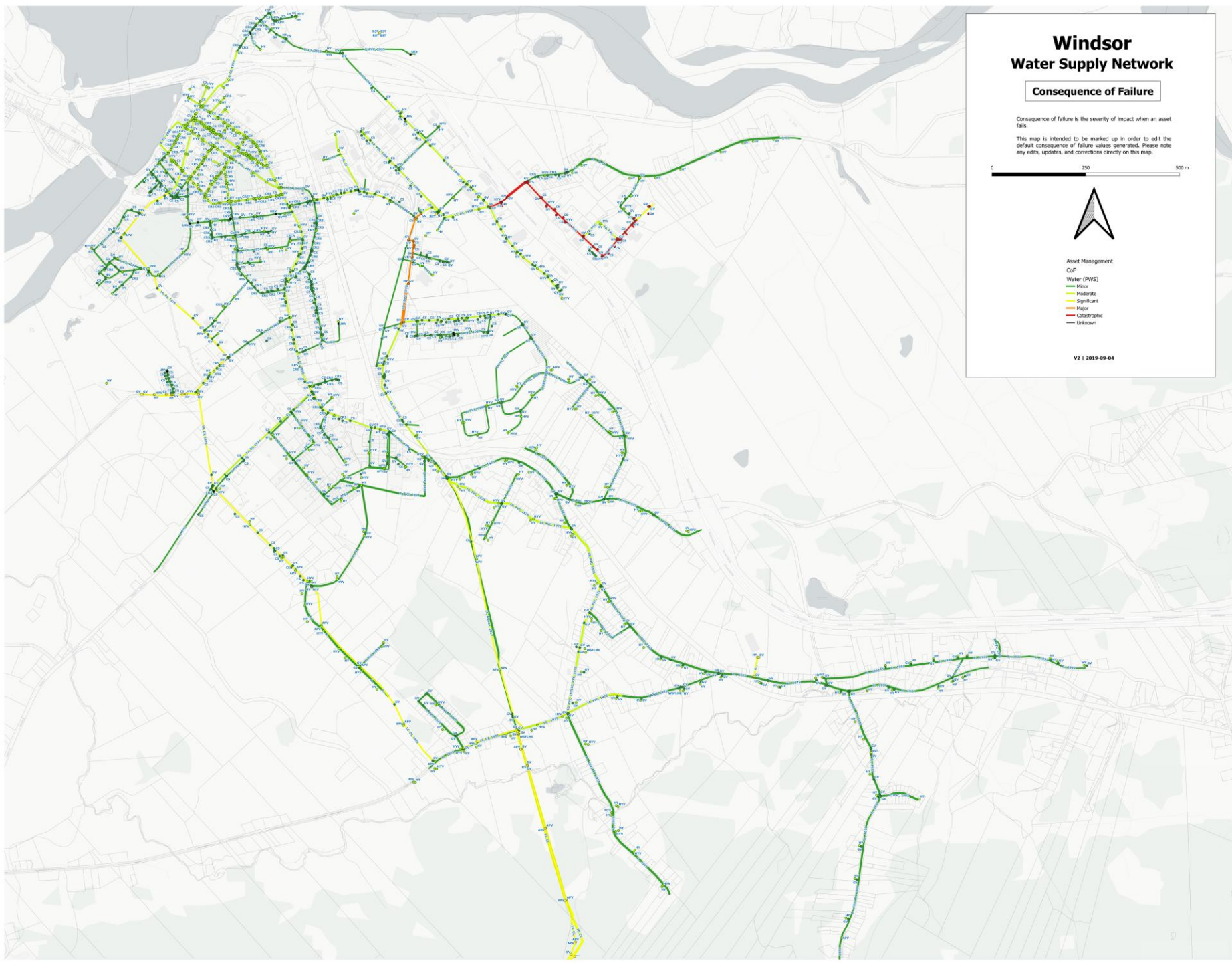
This map is intended to be marked up in order to edit the default consequence of failure values generated. Please note any edits, updates, and corrections directly on this map.

0 250 500 m

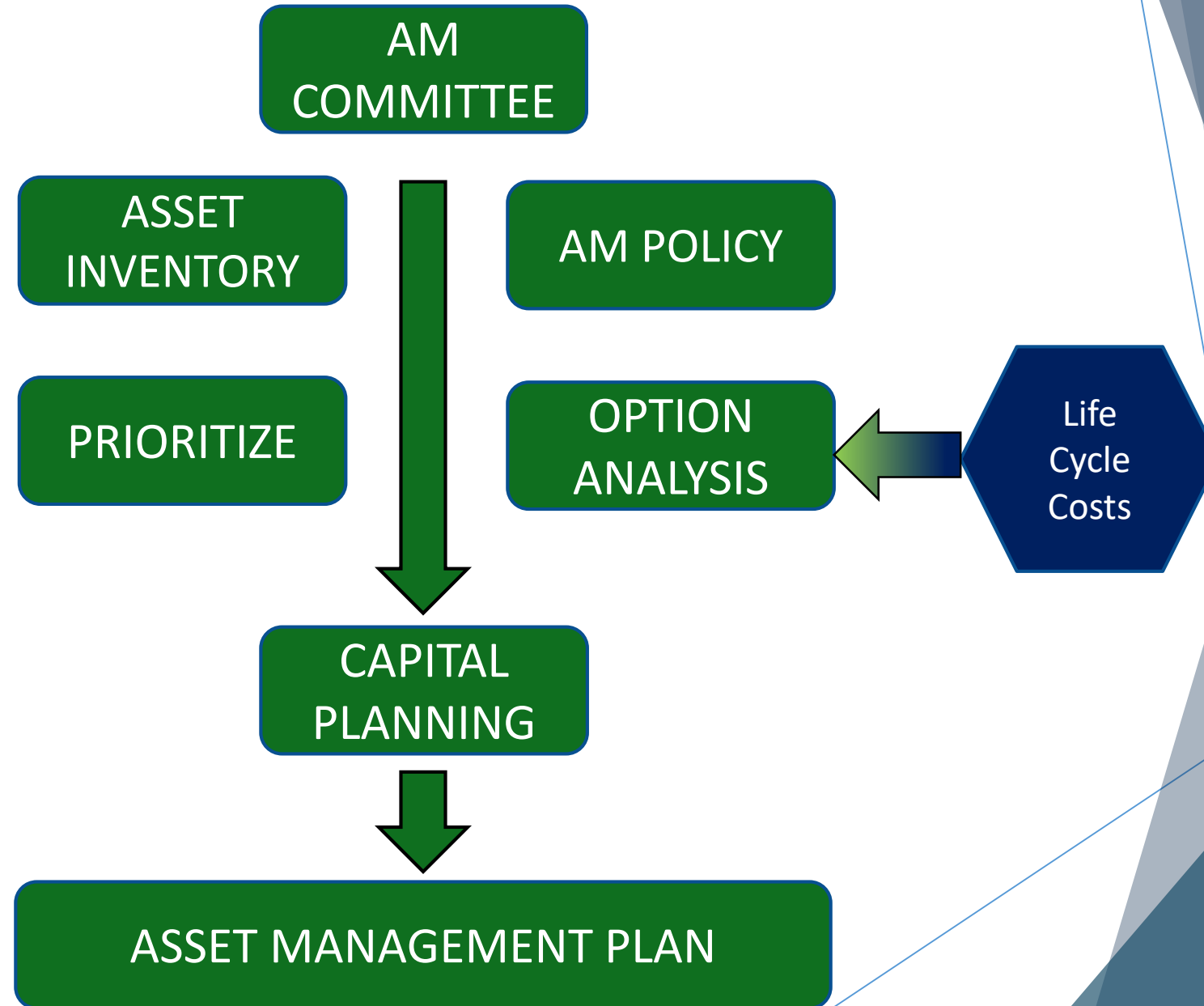


Asset Management
CoF
Water (PWS)
Minor
Moderate
Significant
Major
Catastrophic
Unknown

V2 | 2019-09-04



ASSET MANAGEMENT PLAN



Consolidated service delivery knowing:

- What we have
- What services we offer
- How much it costs to maintain services
- When we need to spend the money

Staff are empowered to support:

- An informed council
- An informed public

The goal is to make life easier, not harder.



QUESTIONS?

